

Stephen P. Covert, Ph.D., Principal

Melissa Abela, Assistant Principal
Tricia Allen, Assistant Principal
Lana Marcotte, Assistant Principal
Roy Sprinkle, Assistant Principal

Pine View School
1 Python Path
Osprey, FL 34229



College Counseling Office
www.pvscollegecounseling.com
CEEB Code 101577

Lance Bergman, College Advisor
Dr. Lori Wiley, College Advisor

www.sarasotacountyschools.net/schools/pineview
Phone 941-486-2001
Fax 941-486-2042

Pine View School

High School Profile 2023-2024

Mission

The mission of Pine View School is to provide a qualitatively different learning environment that nurtures a passion for intellectual curiosity, that encourages risk-taking, independence and innovation, and that is committed to a tradition of academic excellence and social responsibility.

Vision

Pine View is the premier school for arts and sciences dedicated to providing excellence in research-based teaching practices that foster intellectual, social, and emotional growth in gifted students.

School Description

Pine View School for the Gifted was established by the Sarasota County School District in 1969 to meet the needs of intellectually gifted students (Grades 2-12). It is the only school of its kind in the state of Florida, and one of the few stand alone gifted programs in the nation. Pine View has a rich tradition of providing students with an enriched, challenging academic program in which excellence is fostered, attained and celebrated. Pine View has been consistently recognized at both the state and national level as one of the country's top public high schools.

The student experience at Pine View is unique. In a community of over 1,600 gifted students a culture that prizes intellectual and academic inquiry and accomplishment is nurtured. Extensive opportunities are provided for students to explore their creative and leadership potential. Character education activities and service learning projects are a prominent part of the Pine View experience and are designed to expand social awareness and to stress social responsibility. Empowering students to make a difference in the lives of others is a tradition of which Pine View is exceptionally proud.

Enrollment

Students are eligible to attend on the basis of full scale intellectual assessments, performance scales, academic performance and recommendations. Pine View School serves students in grades 2-12 with a total school enrollment of 1,675. High School enrollment is 680 (Grades 9-12) for the 2023-24 school year. There are 157 students in the Class of 2024.

GPA/Class Rank

It is Pine View School policy not to report class rank.

All high school courses (Grades 8-12) are used in computing Grade Point Average. It is important to note that electives taken by many Pine View students for intellectual diversity and challenge are *not* weighted, so that even high grades in these courses may lower a student's weighted grade point average. Grading Policy: A = 90 – 100 B = 80 – 89 C = 70 – 79 D 60 – 69 F = 0 – 59

Evaluation and Testing

SAT (Senior Class)

	2019	2020	2021	2022	2023
ERW	675	688	683	690	687
Math	675	688	686	700	689

ACT (Senior Class)

	2019	2020	2021	2022	2023
English	30.1	31.6	30.4	30.0	30.1
Math	28.9	30.2	28.5	29.0	29.0
Reading	30.2	32.5	31.2	31.5	31.2
Science Reasoning	28.9	20.5	29.2	30.4	29.7
Composite	29.6	31.4	29.9	30.3	30.1

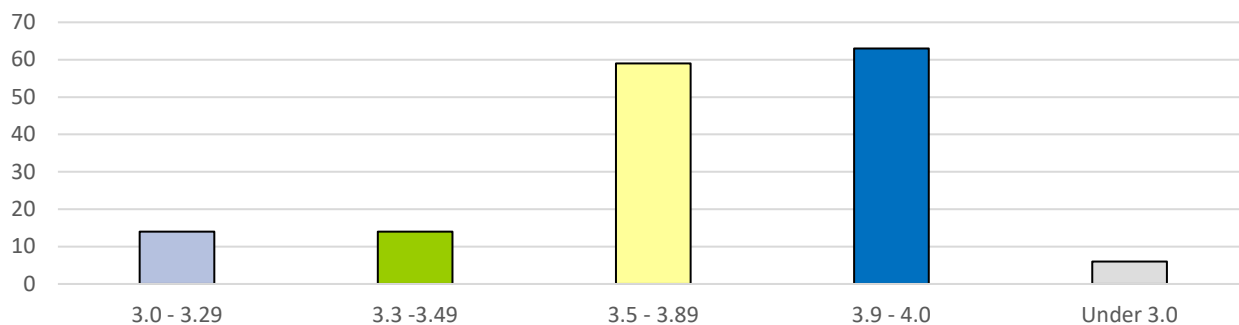
Advanced Placement (Schoolwide 9-12)

	2018-2019	2019-2020	2020-2021	2021-2022	2022-2023
Scores Reported	1831	1919	1847	1752	1705
Score of 5	486	543	534	617	575
Score of 4	582	579	552	556	551
Score of 3	478	507	484	368	412
Score of 2	200	223	191	160	115
Score of 1	85	67	86	51	52
Total 3 or higher	1389	1629	1570	1541	1538

National Merit Scholarship Program

	Class of 2020	Class of 2021	Class of 2022	Class of 2023	Class of 2024
Participants	181	197	199	175	157
Semi-Finalists	27	18	22	30	23
Finalists	25	17	20	30	TBD
Commended Scholars	22	21	40	40	34

Class of 2024 Grade Distribution



Pine View Academics

Pine View School offers a total of 103 weighted courses of which 10 are Dual Enrollment, 35 are Advanced Placement and 58 Honors. The academic experience is accelerated, enriched, and differentiated to meet the needs of gifted students. While a typical daily course load is six periods, the Pine View nine period day allows students to take additional core academic classes and/or to pursue specialized curricular and extracurricular opportunities. Students are required to complete 26 credits to be awarded a *Pine View Diploma*.

English

English I-IV HON
 AP English Language
 AP English Literature
 English ENC 1101 DE
 English ENC 1102 DE
 Great Ideas Poetry LIT 2030 DE
 Intro to Lit. LIT 2000 DE
 Speech I-II
 Creative Writing, I-II
 Creative Writing III HON
 Journalism I, III Broadcast
 Journalism I, III Newspaper
 Journalism I, III Yearbook
 Journ V, VI Hon Broadcast
 Journ V, VI Hon Newspaper
 Journ V, VI Hon Yearbook
 AP Seminar
 AP Research

Mathematics

Algebra I-II HON
 Geometry HON
 Precalculus HON
 AP Precalculus
 Calculus HON
 AP Calculus AB
 AP Calculus BC
 Prob, Stat w/App HON
 AP Statistics
 College Algebra DE
 PreCalc/Trig DE
 Calculus III DE
 Differential Equations DE

Science

Biology I HON
 AP Biology

Science (cont'd)

Bioscience II HON
 Chemistry I HON
 Chem 2 HON (Organic Chem)
 AP Chemistry
 Physics I HON
 AP Physics 1
 AP Physics 2
 AP Physics C: E & M
 Marine Science I HON
 Anatomy/Physiology HON
 AP Environmental Science
 Astronomy HON
 Intro to Astronomy DE
 Descriptive Stellar Astr DE

Social Studies

World History HON
 United States History HON
 AP Human Geography
 AP World History: Modern
 AP European History
 AP United States History
 AP Art History
 Anthropology HON
 U.S. Government HON
 Economics HON
 AP U.S. Government & Pol
 AP Comparative Government
 AP Microeconomics
 AP Macroeconomics
 AP Psychology
 Philosophy HON
 Women's Studies
 History of the Vietnam War
 World Religions
 Global Studies
 Multi-Cultural Studies

Social Studies (cont'd)

African Amer Hist HON
 Personal Fin Lit HON
 Holocaust HON
 Law Studies
 Sociology
 Philosophy HON

World Language

Spanish I-II
 Spanish III-V HON
 French I-II
 French III-IV HON
 AP Spanish Language
 AP Spanish Literature
 AP French Lang & Culture
 Chinese I-II
 Chinese III-IV HON
 AP Chinese Language

Art

Digital Art Imaging I-II
 Digital Art Imaging III HON
 2-D Studio Art I-II
 2-D Studio Art 3 HON
 3-D Studio Art I-II
 Port Dev 2-D Design HON
 Port Dev 3-D Design HON
 AP 2-D Art & Design
 AP 3-D Art & Design
 AP Drawing

Music

Orchestra 3-4
 Orchestra 5-6 HON
 Chorus 3-4
 Chorus 5-6 HON

Music (cont'd)

Vocal Ensemble I-III
 Vocal Ensemble IV HON
 Music Theory II HON
 AP Music Theory
 Jazz Ensemble I-III
 Jazz Ensemble IV HON
 Concert Band 3-5
 Concert Band 6 HON
 Instrumental Tecngs 1-3
 Instrumental Tecngs 4 HON
 Guitar I-II

Theater

Theatre I-II
 Theatre III - IV HON

Technology

Intro Engineering Design HON
 Principals of Engineering HON
 Aerospace Eng. HON
 Engr Design & Dev HON
 Digital Media I-II
 Dig Media III-IV HON
 Digital Media/MM MG Prod
 AP Computer Science Princ
 AP Computer Science A

Senior Electives

Executive Externship

Students may elect to enroll in a variety of Dual Enrollment courses offered through the University of Florida, University of South Florida, or State College of Florida.

Graduation Requirements		
English	4 credits	Concentration in composition and literature
Mathematics	4 credits	Beginning with Algebra 1 Honors
Science	3 credits	Four credits recommended, two lab sciences required
Social Studies	3 credits	World History & U.S. History .5 Economics & .5 Government
World Language	3 credits	Minimum 3 years in one language
H.O.P.E	1 credit	Health Opportunities through Physical Education
Electives	8 credits	One credit minimum practical art / performing fine art

Five Year College Matriculation

Below is the list of institutions to which Pine View students matriculated between 2019-2023.

Adelphi University
University of Alabama
American University
American University of Paris
Amherst College
Appalachian State University
Auburn University
Babson College
Barnard College
Bellevue College
Boston College
Boston University
Bowdoin College
Brandeis University
University of British Columbia
Brown University
Bryn Mawr College
Bucknell University
California Institute of Technology
University of California, Berkeley
University of California, Irvine
University of California, Los Angeles
University of California, San Diego
University of California, Santa Barbara
University of California, Santa Cruz
Carnegie Mellon University
Cebu Doctors' University
Cedarville University
University of Central Florida
University of Chicago
Colgate University
University of Colorado, Boulder
Colorado School of Mines
Colorado State University, Fort Collins
Columbia University
Cornell University
Dartmouth College
Davidson College
University of Denver
DePaul University
Drake University
Drexel University
Duke University
Duquesne University
Eckerd College
Elon University
Embry-Riddle Aeronautical University
Emerson College
Emory University
Flagler College
Florida Atlantic University
Wilkes Honors College of FAU
Florida Gulf Coast University
Florida Institute of Technology
Florida International University
Florida Polytechnic University
Florida Southern College
Florida State University
University of Florida
Fordham University
Francis Marion University
Full Sail University
Furman University
George Washington University
Georgetown University
Georgia Institute of Technology
Georgia Military College
Harding University
Harvard University
Haverford College
University of Hawaii at Manoa
Hawaii Pacific University
High Point University
Hobart William Smith Colleges
University of Illinois, Urbana
Iona College
Ithaca College
Johns Hopkins University
Lehigh University
Liberty University
List College - JTS
The London School of Economics
Louisiana State University
Loyola Marymount University
Univ of Massachusetts-Dartmouth
Massachusetts Institute of Technology
McGill University
McPherson College
Miami University, Oxford
University of Miami
Michigan State University
University of Michigan, Ann Arbor
Middlebury College
Millikin University
University of Minnesota-Twin Cities
University of Missouri-Kansas City
Mount Holyoke College
New College of Florida
University of New Hampshire
New York University
Univ of North Carolina, Chapel Hill
Univ of North Carolina, Charlotte
Univ of North Carolina, Raleigh
University of North Florida
University of North Texas
Northeastern University
Northwestern University
University of Notre Dame
Nova Southeastern University
Oberlin College
Emory University
Pennsylvania State University
University of Pennsylvania
University of Pittsburgh
Princeton University
Purdue University
Reichman University
Rensselaer Polytechnic Institute
Rhodes College
Rice University
University of Richmond
Ringling College of Art & Design
Roanoke College
Rochester Institute of Technology
Rollins College
Rutgers University
Saint John's University
Saint Louis University
Santa Fe College
Savannah College of Art & Design
Smith College
University of South Carolina
University of South Florida
University of Southern California
Southern Methodist University
Stanford University
State College of Florida
State University of New York
Stetson University
Stonehill College
Swarthmore College
Syracuse University
Tallahassee Community College
The University of Tampa
University of Tennessee, Knoxville
The University of Texas, Austin
The University of Texas, Dallas
The Culinary Institute of America
The Ohio State University
University of Toronto
Tufts University
Tulane University
United States Military Academy
United States Naval Academy
Universiteit van Amsterdam
University College London
Univ of British Columbia, Okanagan
Vancouver Film School
Vanderbilt University
University of Victoria
University of Virginia
Wake Forest University
Washington and Lee University
Washington University in St. Louis
University of Washington-Seattle
Wesleyan University
College of William & Mary
Williams College
University of Wisconsin, Madison
Worcester Polytechnic Institute
Yale University